

You will be asked to play three of the following styles:

As you perform, first establish the style and then comp (ad lib) while still maintaining the groove. The snare rhythms are not mandatory and other rhythms are allowed.

Basic Swing - MM = 120 or moderate tempo

Jazz Waltz - MM = 120 or moderate tempo

Latin Feel - MM = 120 or moderate tempo

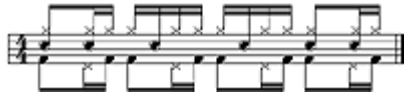


Shuffle - MM = 120 or moderate

tempo



Samba MM = 100 or faster



Bossa MM = 120 or faster

